



# ZICO REFRACTORIES CO. Brochures



## Index Of Contents :

. About Us .....	2
. Steel Industry .....	4
. Coreless Induction Furnace - CIF .....	6
. Steel Transport Ladle .....	7
. Tundish .....	8
. Cast Iron Industry .....	10
. Coreless Induction Furnace - CIF .....	12
. Iron Transport Ladle .....	13
. Channel Holding Furnace .....	14
. Channel Pouring Furnace .....	15
. Ferro Alloy Industry .....	16
. Ferrosilicon Transport Ladle.....	17
Datasheets	
. Ramming .....	18
. Castable (Low Cement) .....	19
. Castable (Medium Cement) .....	20
. Castable (Regular Cement) .....	21
. Grout & Trowelling .....	22
. Insulating .....	23
. Mortar & Plast .....	24



## about us :

Z I C O Refractories Co. was established in 1982 and has a long standing reputation for producing high quality monolithic refractories. Taking advantage of highly qualified experts, our company has been specialized in developing advanced monolithic refractories including Silica, Alumina & Magnesia based Ramming Mixes, Alumina based Castables, Mortars and Grouts used in high temperature operations. We have created value for our customers thanks to our professional and experienced R&D department, Quality Control, Sales Engineering and After Sales Services. We are also deeply involved in designing, engineering, installation and technical consulting with customers to improve products performance.

Z I C O Co. has succeeded to received ISO 9001 :2018 and attempted to implement organization excellence model for production line and quality control of products.



**Steel Industry**

# Coreless Induction Furnace - CIF

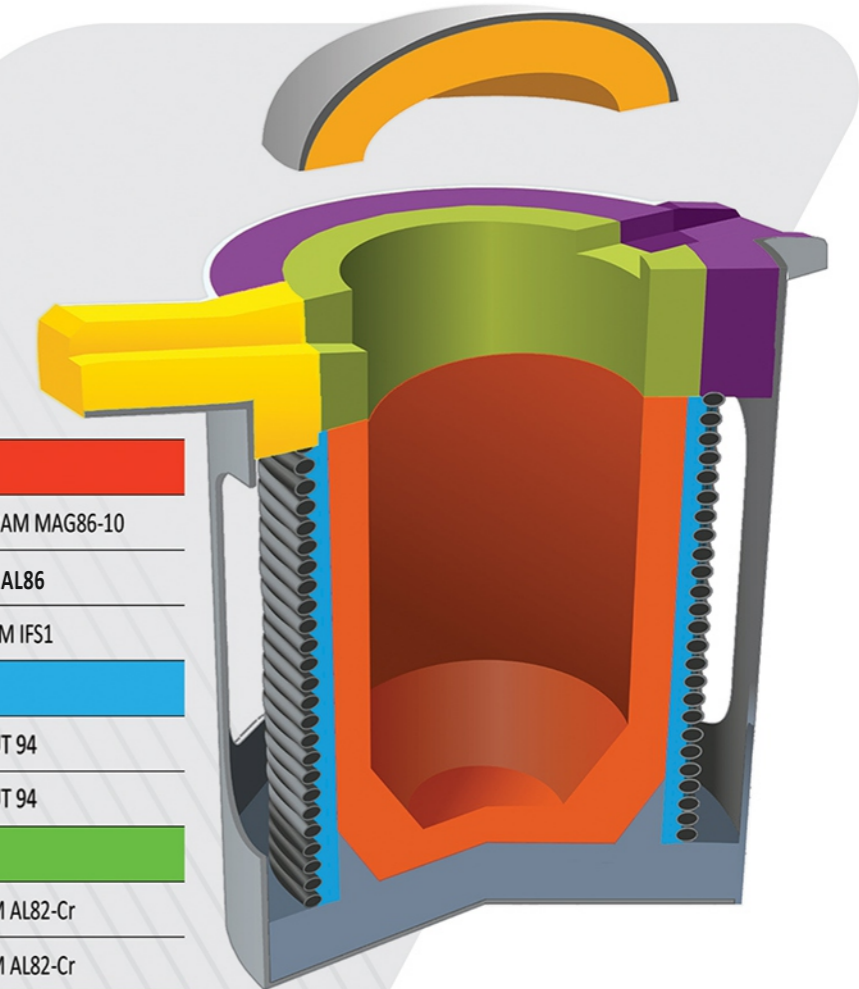


- Coreless Induction Furnace - CIF
- Steel Transport Ladle
- Tundish



Coreless Induction Furnace-CIF

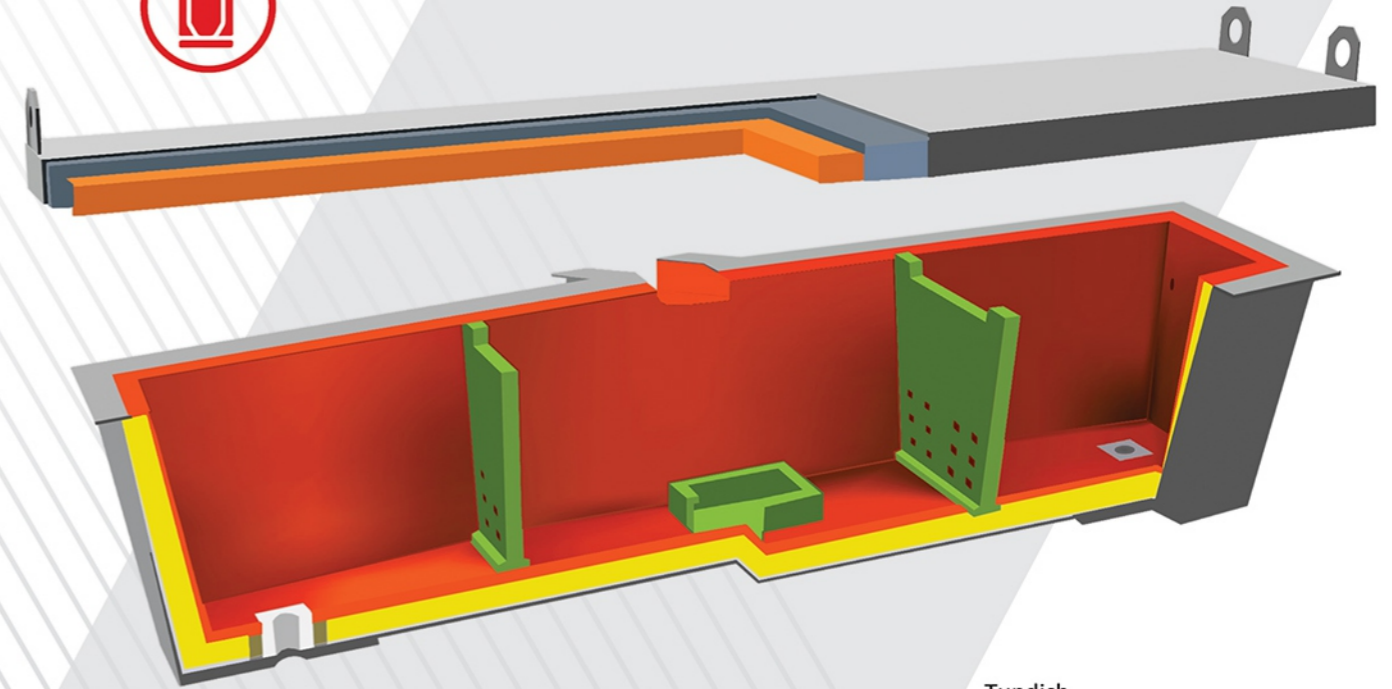
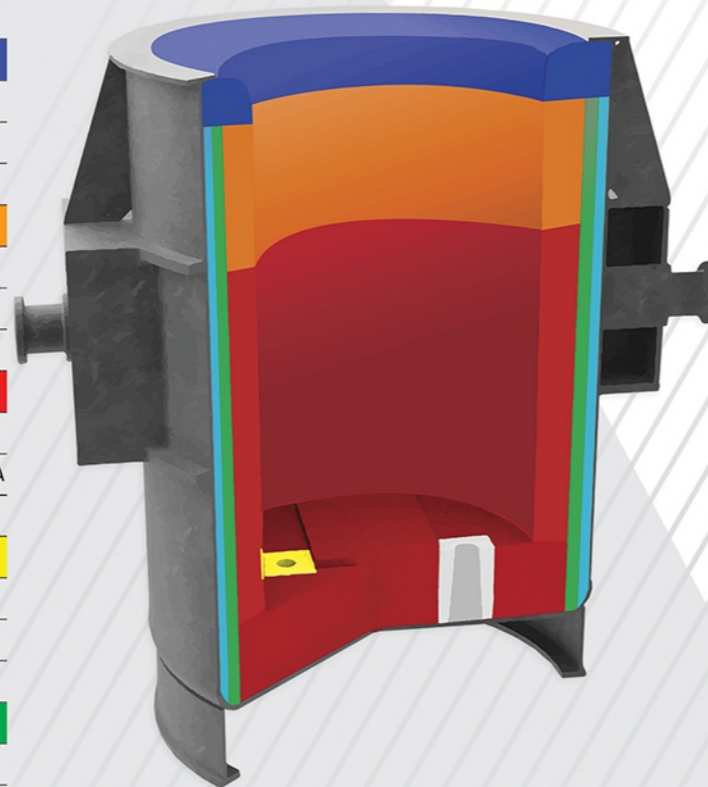
<b>Working Lining</b>	
Manganese Alloyed Steel	ZICORAM MAG84-10 or ZICORAM MAG86-10
Alloyed Steel	ZICORAM AL88 or ZICORAM AL86
Carbon Steel	ZICORAM IFS BO(S) or ZICORAM IFS1
<b>Coil Grout</b>	
Alloyed Steel	ZICOGROUT 70 to ZICOGROUT 94
Carbon Steel	ZICOGROUT 70 to ZICOGROUT 94
<b>Top Ring</b>	
Alloyed Steel	ZICORAM AL84-Cr or ZICORAM AL82-Cr
Carbon Steel	ZICORAM AL84-Cr or ZICORAM AL82-Cr
<b>Support Rings</b>	
Alloyed Steel	ZICOCAST 70M or ZICOCAST 70L
Carbon Steel	ZICOCAST 70M or ZICOCAST 70L
<b>Spout</b>	
Alloyed Steel	ZICOCAST 93L-Cr or ZICOCAST 95L-Cr
Carbon Steel	ZICOCAST 93L-Cr or ZICOCAST 95 L
<b>Cover</b>	
Alloyed Steel	ZICOCAST 80M or ZICOCAST 80L
Carbon Steel	ZICOCAST 70M or ZICOCAST 70L
<b>Patching Materials</b>	
Manganese Alloyed Steel	ZICORAM MAG84-10 or ZICORAM MAG86-10
Alloyed Steel	ZICORAM AL88 or ZICORAM AL86
Carbon Steel	ZICORAM IFS BO(S) or ZICORAM IFS1





### Steel Transport Ladle

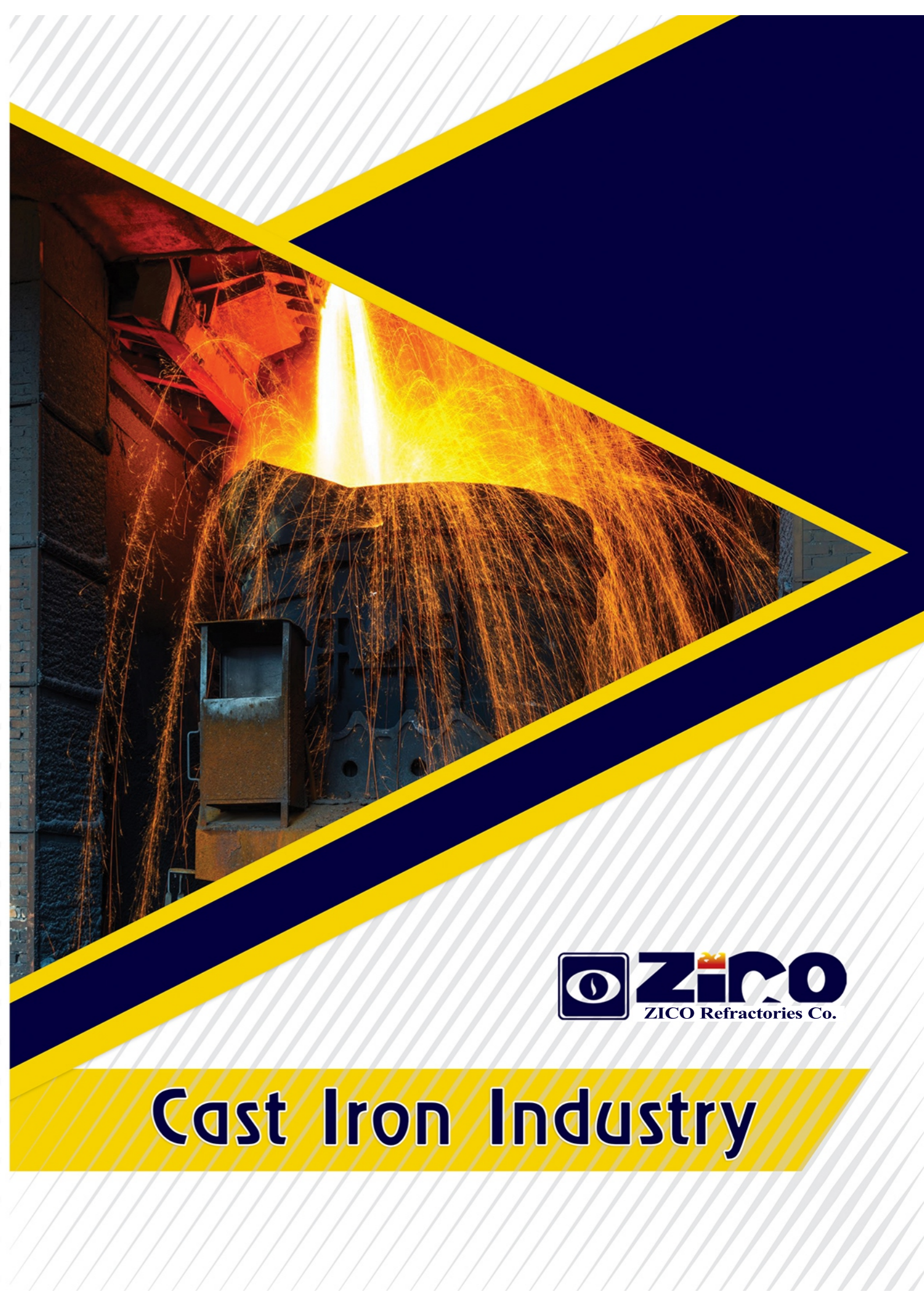
Lip Ring	
Alloyed Steel	ZICOCAST 70RT or ZICOCAST 80RT
Carbon Steel	ZICOCAST 60RT or ZICOCAST 70RT
Slag Zone	
Alloyed Steel	ZICOCAST 93L-Cr or ZICOCAST 93L-Sp
Carbon Steel	ZICOCAST 93L-Cr or ZICOCAST 93L-Sp
Melt Zone	
Alloyed Steel	ZICOCAST 95L or ZICOCAST 97L
Carbon Steel	ZICOCAST 95L or ZICOCAST 97L or ZICOCAST 90L-A
Impact Zone	
Alloyed Steel	ZICOCAST 95L or ZICOCAST 97L
Carbon Steel	ZICOCAST 95L or ZICOCAST 97L
Safety Lining	
Alloyed Steel	ZICOCAST 60L or ZICOCAST 70L or ZICOCAST 80L
Carbon Steel	ZICOCAST 60L or ZICOCAST 70L or ZICOCAST 80L
Insulating Lining	
Alloyed Steel	ZICOCAST IS1200
Carbon Steel	ZICOCAST IS1000
Slide Gate	
Alloyed Steel	ZICOWell block 90L-Sp
Carbon Steel	ZICOWell block 90L-Sp
Slide Gate Mortar	
Alloyed Steel	ZICOMOR SG
Carbon Steel	ZICOMOR SG



### Tundish

Permanent Lining	
	ZICOCAST 70L-AN
	ZICOCAST 80L-AN
	ZICOCAST 80L
	ZICOCAST 85L
Insulating Lining	
	ZICOGUN IS1000
	ZICOGUN IS1200
Impact & Dam	
	ZICOCAST 90L-AN
	ZICOCAST 95L
	ZICOCAST 97L
Cover	
	ZICOCAST 50M
	ZICOCAST 60M

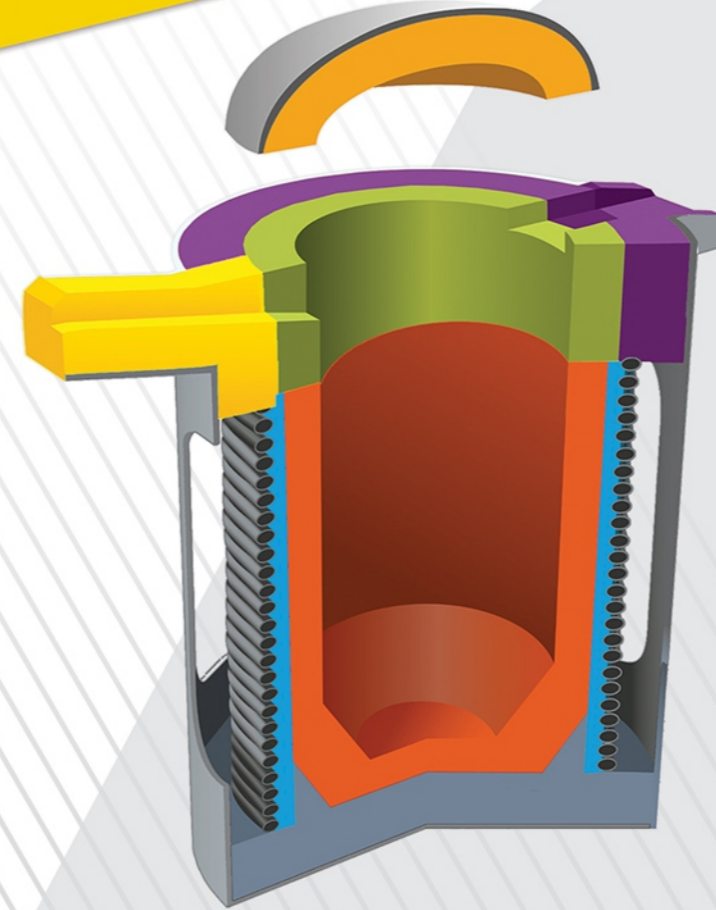
NOTE:



# Coreless Induction Furnace - CIF



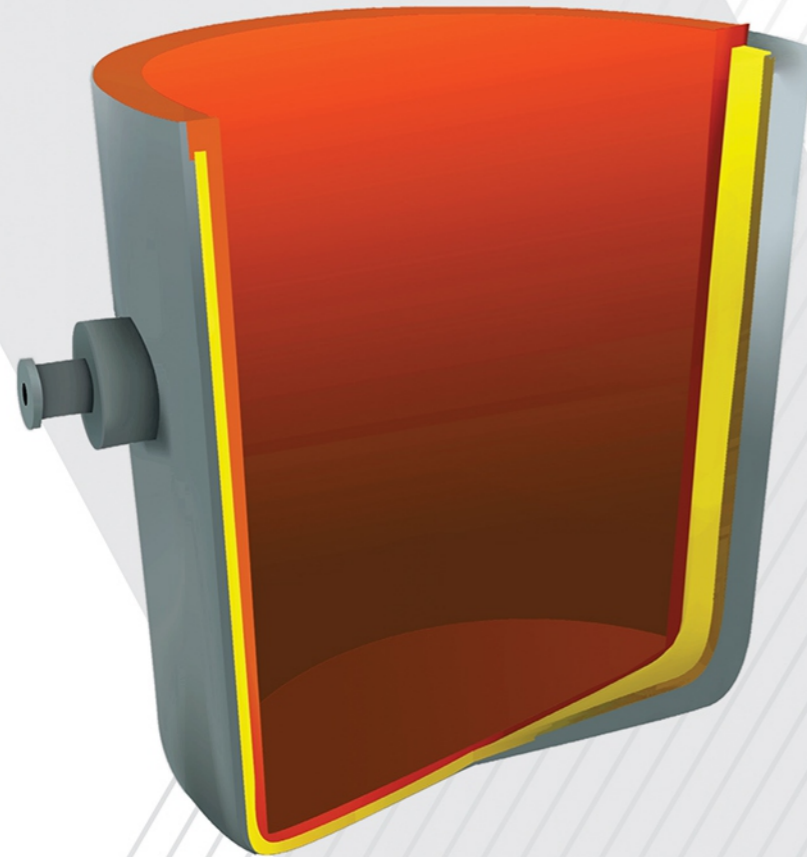
- Coreless Induction Furnace - CIF
- Iron Transport Ladle
- Channel Holding Furnace
- Channel Pouring Furnace



Coreless Induction Furnace-CIF

Working Lining	
Ductile Cast Iron	ZICORAM AL86 or ZICORAM IFSBO2(S) or ZICORAM IFS2
Grey Cast Iron	ZICORAM AL86 or ZICORAM IFSBO3(S) or ZICORAM IFS3
Coil Grout	
Ductile Cast Iron	ZICOGROUT 70 or ZICOGROUT 70 S
Grey Cast Iron	ZICOGROUT 70 or ZICOGROUT 70 S
Top Ring	
Ductile Cast Iron	ZICORAM AL83-Cr or ZICORAM AL81-Cr
Grey Cast Iron	ZICORAM AL83-Cr or ZICORAM AL81-Cr
Support Rings	
Ductile Cast Iron	ZICOCAST 60M or ZICOCAST 60L
Grey Cast Iron	ZICOCAST 60M or ZICOCAST 60L
Spout	
Ductile Cast Iron	ZICOCAST 90L or ZICOCAST 95L
Grey Cast Iron	ZICOCAST 90L or ZICOCAST 95L
Cover	
Ductile Cast Iron	ZICOCAST 60M or ZICOCAST 60L or ZICOCAST 70M or ZICOCAST 70L
Grey Cast Iron	ZICOCAST 60M or ZICOCAST 60L or ZICOCAST 70M or ZICOCAST 70L
Patching Materials	
Ductile Cast Iron	ZICORAM AL86 or ZICORAM IFSBO2(S) or ZICORAM IFS2
Grey Cast Iron	ZICORAM AL86 or ZICORAM IFSBO3(S) or ZICORAM IFS3

## Iron Transport Ladle



Iron Transport Ladle

**Working Lining**

Ductile Cast Iron      ZICORAM IFSBO2(S) or ZICORAM IFS2

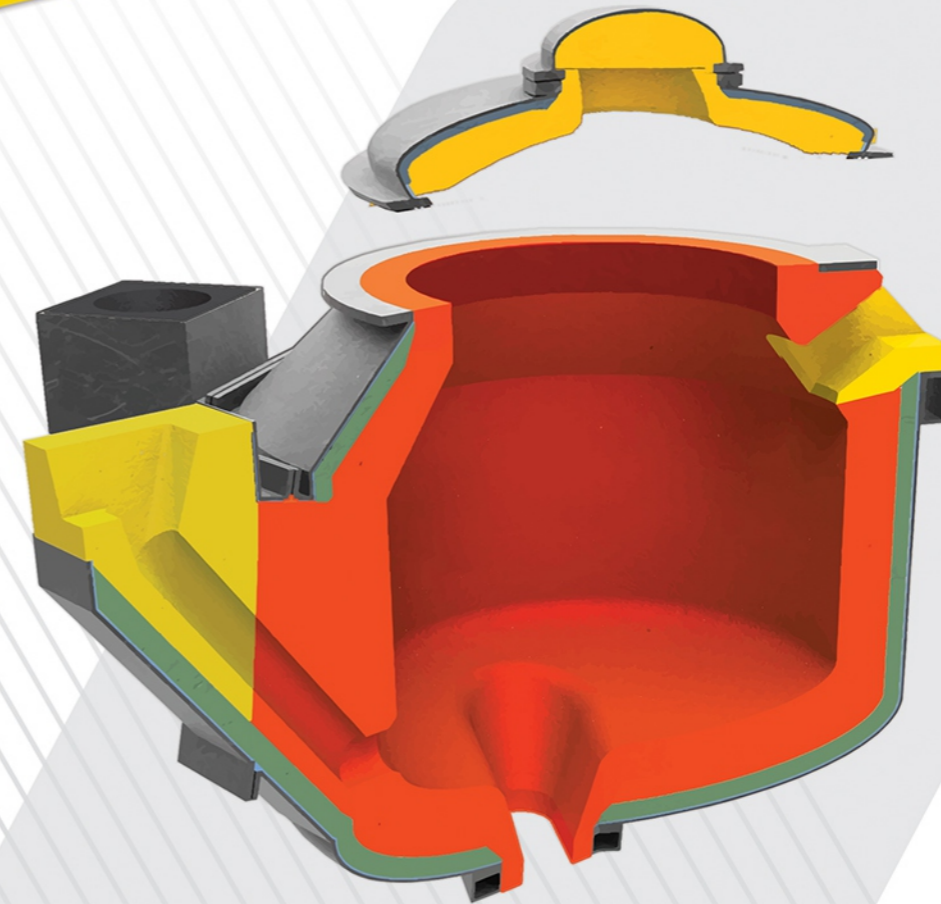
Grey Cast Iron        ZICORAM IFSBO3(S) or ZICORAM IFS3

**Safety Lining**

Ductile Cast Iron      ZICOCAST 50M or ZICOCAST 60M

Grey Cast Iron        ZICOCAST 50M or ZICOCAST 60M

## Channel Holding Furnace



Pouring Furnace

**Working Lining**

ZICORAM AL96P-Cr

ZICORAM AL92P-Cr

ZICOCAST 93L-Cr

ZICOCAST 95L-Cr

**Inlet , Outlet**

ZICOCAST 93L-Cr

ZICOCAST 95L-Cr

**Cover**

ZICOCAST 90M

ZICOCAST 90L

**Inductor**

ZICORAM MAG85-SP

ZICORAM PATCH SP

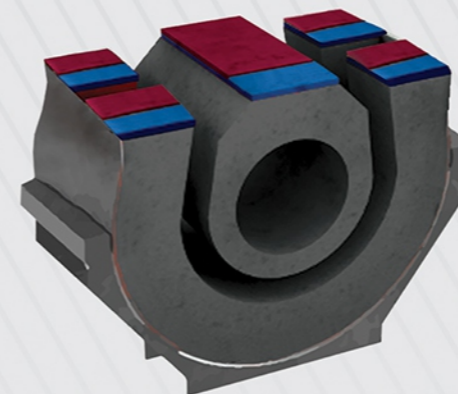
**Joints1**

ZICO MOR 90

ZICO MOR SG

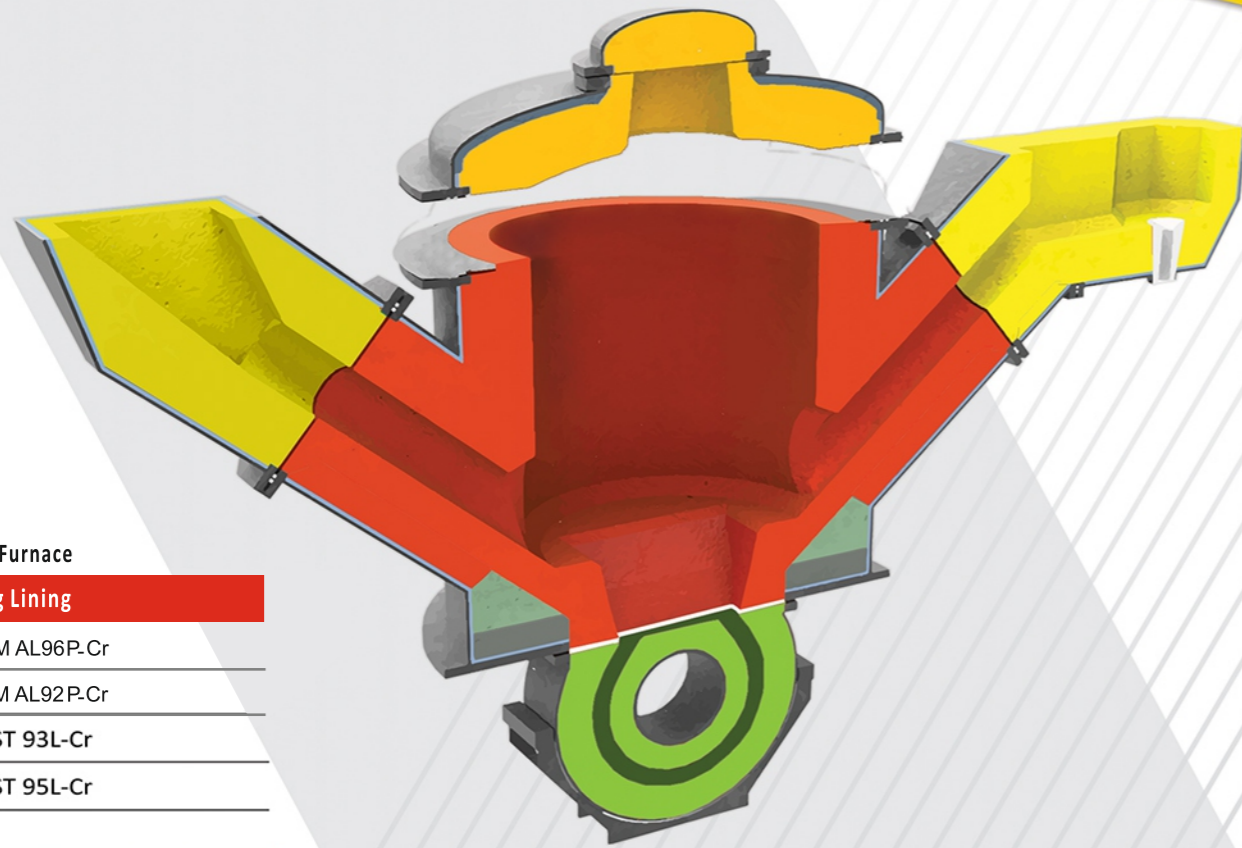
**Joints2**

ZICO Joint Cr





# Channel Pouring Furnace



**Pouring Furnace**

**Working Lining**

- ZICORAM AL96P-Cr
- ZICORAM AL92P-Cr
- ZICOCAST 93L-Cr
- ZICOCAST 95L-Cr

**Inlet , Outlet**

- ZICOCAST 93L-Cr
- ZICOCAST 95L-Cr

**Cover**

- ZICOCAST 90M
- ZICOCAST 90L

**Inductor**

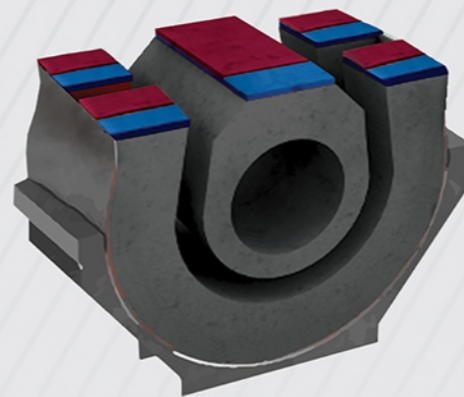
- ZICORAM MAG85-SP
- ZICORAM PATCH SP

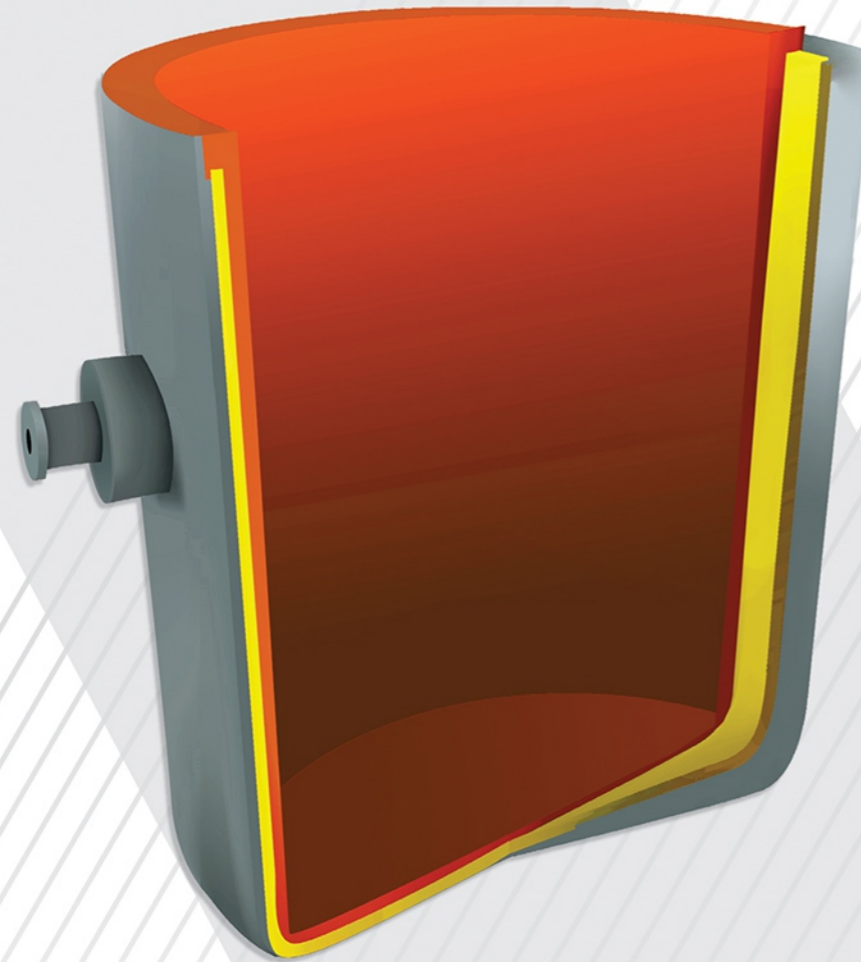
**Joints1**

- ZICO MOR 90
- ZICO MOR SG

**Joints2**

- ZICO Joint Cr





Ferro Alloy Industry

**Working Lining**

ZICOCAST H

ZICOCAST 60M

**Insulating Lining**

ZICOCAST IS1000

ZICOCAST IS1200

Ferro Alloy Industry

Product name	Main raw material	Bonding	Install Method	Required material (t/m3)	Max service T (°C)	Chemical analysis (Average %)					
						Al2O3	SiO2	CaO	Fe2O3	MgO	Cr2O3
ZICORAM AL88	Alumina	Ceramic	R & V	2.9	1800	85-88	<0.5	<0.2	<0.35	12-13	-
ZICORAM AL86	Alumina	Ceramic	R & V	2.9	1800	83-86	<0.5	<0.2	<0.35	14-15	-
ZICO RAM AL84-Cr	Alumina / Chromium oxide	Ceramic	R & V	2.9	1800	82-84	<0.5	<0.2	<0.35	12-13	2.5-3
ZICO RAM AL82-Cr	Alumina / Chromium oxide	Ceramic	R & V	2.9	1800	80-82	<0.5	<0.2	<0.35	12-13	4.5-5
ZICO RAM AL83-Cr	Alumina / Chromium oxide	Ceramic	R & V	2.9	1800	80-83	<0.5	<0.2	<0.36	14-15	2.5-3
ZICO RAM AL81-Cr	Alumina / Chromium oxide	Ceramic	R & V	2.9	1800	78-81	<0.5	<0.2	<0.37	14-15	4.5-5
ZICO RAM AL 96P-Cr	Alumina / Chromium oxide	Ceramic	R & V	2.9	1800	95-97	<0.1	-	<0.3	-	1.5-2
ZICO RAM AL 92P-Cr	Alumina / Chromium oxide	Ceramic	R & V	2.9	1800	91-93	<1	-	<1	-	1.5-2
ZICORAM Mag 86-10	Sintered magnesia	Ceramic	R & V	2.8	1800	9-11	<1	<1	<0.8	86-89	-
ZICORAM Mag 84-10	Sintered magnesia	Ceramic	R & V	2.8	1800	9-11	2-3	<1	<1	84-88	-
ZICORAM MAG85- SP	Sintered magnesia	Ceramic	R & V	2.8	1800	12-14	2-3	<1	<1	82-85	-
ZICORAM PATCH SP	Sintered magnesia	Ceramic	R & V	2.75	1800	10-12	2-3	<1	<1	81-84	-
ZICORAM IFS1	Crystalline silica / Boric acid	Ceramic/inorg	R & V	2	1650	1	98	0.2	0.3	-	-
ZICORAM IFS2	Crystalline silica / Boric acid	Ceramic/inorg	R & V	2	1600	1	98	0.2	0.3	-	-
ZICORAM IFS3	Crystalline silica / Boric acid	Ceramic/inorg	R & V	2	1550	1	98	0.2	0.3	-	-
ZICORAM IFS4	Crystalline silica / Boric acid	Ceramic/inorg	R & V	2	1350	1	98	0.2	0.3	-	-
ZICORAM IFSBO	Crystalline silica / Boron oxide	Ceramic/inorg	R & V	2	1650	1	98	0.2	0.3	-	-
ZICORAM IFSBO(S)	Crystalline silica / Boron oxide	Ceramic/inorg	R & V	2	1650	1	98	0.2	0.3	-	-
ZICORAM IFSBO2(S)	Crystalline silica / Boron oxide	Ceramic/inorg	R & V	2	1600	1	98	0.2	0.3	-	-
ZICORAM IFSBO3(S)	Crystalline silica / Boron oxide	Ceramic/inorg	R & V	2	1550	1	98	0.2	0.3	-	-
ZICORAM IFSBO4(S)	Crystalline silica / Boron oxide	Ceramic/inorg	R & V	2	1350	1	98	0.2	0.3	-	-

R : Ramming

V : Vibrating

## Technical Data Insulating

Product name	Main raw material	Bonding	Install Method	Water demand (%)	Required material (t/m <sup>3</sup> )	CCS 110°C (MPa)	Max service T (°C)	Chemical analysis (Average %)			
								Al <sub>2</sub> O <sub>3</sub>	SiO <sub>2</sub>	CaO	Fe <sub>2</sub> O <sub>3</sub>
ZICOCAST IS1400	Fireclay / Perlite	Hydraulic	V	20-30	1.3-1.4	2-5	1200	36-40	38-42	8-9	4.5-5.5
ZICOCAST IS1400-LI	Fireclay / Perlite	Hydraulic	V	25-35	1.3-1.4	2-5	1200	38-41	48-52	3-4	<1.5
ZICOCAST IS1200	Fireclay / Perlite	Hydraulic	V	30-40	1.1-1.2	2-5	1100	32-36	44-47	8-9	4-5
ZICOCAST IS1200-LI	Fireclay / Perlite	Hydraulic	V	35-45	1.1-1.2	2-5	1100	36-40	44-47	7-8	<2
ZICOCAST IS1000	Fireclay / Perlite	Hydraulic	V	35-45	0.9-1	2-5	1000	30-34	44-48	10-11	5-6
ZICOCAST IS1000-LI	Fireclay / Perlite	Hydraulic	V	40-50	0.9-1	2-5	1000	34-38	44-46	9-10	<2
ZICOCAST IS800	Fireclay / Perlite	Hydraulic	V	40-50	0.7-0.8	2-5	800	28-32	46-50	10-11	4.5-5.5
ZICOCAST IS800-LI	Fireclay / Perlite	Hydraulic	V	45-55	0.7-0.8	2-5	800	33-37	45-49	9-10	<2

V : Vibrating

## Technical Data Mortar

Product name	Main raw material	Bonding	Install Method	Water demand (%)	Max service T (°C)	Chemical analysis (Average %)			
						Al <sub>2</sub> O <sub>3</sub>	SiO <sub>2</sub>	Fe <sub>2</sub> O <sub>3</sub>	Cr <sub>2</sub> O <sub>3</sub>
ZICO MOR 90	Tabular Alumina	Ceramic	Tr	12-14	1750	87-91	5-9	<0.4	-
ZICOMOR 80	Tabular Alumina / Bauxite	Ceramic	Tr	20-22	1650	77-81	10-14	<1.5	-
ZICOMOR 70	Bauxite / Fireclay	Ceramic	Tr	21-23	1600	68-72	16-20	<2	-
ZICOMOR 60	Bauxite / Fireclay	Ceramic	Tr	25-27	1550	58-62	25-28	<2.5	-
ZICOMOR 50	Fireclay	Ceramic	Tr	26-28	1500	47-51	33-37	<2.5	-
ZICOMOR 40	Fireclay	Ceramic	Tr	26-28	1450	38-42	41-45	<2.5	-
ZICOMOR SG	Tabular Alumina / Chromium oxide	Ceramic	Tr	18-22	1750	90	5	<0.2	4
ZICO Joint Cr	Chromium Oxide	Ceramic	Tr	18.5-20.5	1800	0.1	-	0.1	97

T : Trowelling

## Technical Data Plast

Product name	Main raw material	Bonding	Install Method	Water demand (%)	Required material (t/m <sup>3</sup> )	CCS 110°C (MPa)	Max service T (°C)	Chemical analysis (Average %)				
								Al <sub>2</sub> O <sub>3</sub>	SiO <sub>2</sub>	CaO	Fe <sub>2</sub> O <sub>3</sub>	P <sub>2</sub> O <sub>5</sub>
ZICO PLAST 80	Tabular/Bauxite	Chemical	R	7-9	2.45-2.7	10-30	1700	78-80	12-16	<0.5	<1.5	4-5
ZICO PLAST 70-AN	Tabular/Andalusite	Chemical	R	5-6	2.4-2.6	10-30	1650	68-72	22-26	<0.5	<1	2-3
ZICO PLAST 70	Bauxite/Fireclay	Chemical	R	5.5-6	2.4-2.6	10-30	1650	68-72	18-22	<0.5	<2	2-3

R : Ramming

## Technical Data Castable (Regular Cement)

## Technical Data Grout & Trowelling

Product name	Main raw material	Bonding	Install Method	Water demand (%)	Required material (t/m <sup>3</sup> )	CCS 110°C (MPa)	Max service T (°C)	Chemical analysis (Average %)			
								Al <sub>2</sub> O <sub>3</sub>	SiO <sub>2</sub>	CaO	Fe <sub>2</sub> O <sub>3</sub>
ZICOCAST 95R	Tabular Alumina	Hydraulic	V	7-9	3	80-110	1800	93-96	1	4-5	<0.2
ZICOCAST 90R	Tabular Alumina / Bauxite	Hydraulic	V	7-9	2.9	80-110	1750	88-92	2-4	4-5	<1
ZICOCAST 85R	Tabular Alumina / Bauxite	Hydraulic	V	7-9	2.85	80-110	1700	83-87	4-7	4-5	<2
ZICOCAST 80R	Bauxite / Fireclay	Hydraulic	V	7-9	2.75	80-110	1650	78-82	8-11	4-5	<2
ZICOCAST 70R	Bauxite / Fireclay	Hydraulic	V	7-9	2.7	60-90	1600	68-72	16-20	4-5	<2
ZICOCAST 60R	Bauxite / Fireclay	Hydraulic	V	7-9	2.5	50-80	1550	58-62	25-29	4-5	<2
ZICOCAST 55R	Bauxite / Fireclay	Hydraulic	V	7-9	2.4	50-80	1500	53-57	31-34	4-5	<2
ZICOCAST 50R	Bauxite / Fireclay	Hydraulic	V	7-9	2.35	50-80	1450	48-52	35-39	4-5	<2
ZICOCAST 45R	Fireclay	Hydraulic	V	8-10	2.3	50-80	1400	45-49	36-40	4-5	<2.5
ZICOCAST40R	Fireclay	Hydraulic	V	8-10	2.3	50-80	1400	40-45	42-46	4-5	<2
ZICOCAST ES	Fireclay	Hydraulic	V	11-14	2.2	30-50	1400	40-45	34-37	8-9	5-6

V : Vibrating

Product name	Main raw material	Bonding	Install Method	Water demand (%)	Required material (t/m <sup>3</sup> )	CCS 110°C (MPa)	Max service T (°C)	Chemical analysis (Average %)				
								Al <sub>2</sub> O <sub>3</sub>	SiO <sub>2</sub>	CaO	Fe <sub>2</sub> O <sub>3</sub>	MgO
ZICO GROUT94	Tabular Alumina	Hydraulic	Tr&V	10-12	2.8	50-70	1800	91-95	<2	4-5	<0.2	-
ZICO GROUT 90	Tabular Alumina / Bauxite	Hydraulic	Tr&V	10-12	2.7	50-70	1750	88-92	2-4	4-5	<0.2	-
ZICO GROUT85	Tabular Alumina / Bauxite	Hydraulic	Tr&V	9-11	2.6	50-70	1700	83-87	4-7	4-5	<1.5	-
ZICO GROUT 80	Bauxite / Fireclay	Hydraulic	Tr&V	10-12	2.65	40-60	1650	78-82	7-10	4-5	<2	-
ZICO GROUT 70	Bauxite / Fireclay	Hydraulic	Tr&V	11-13	2.35	40-60	1600	68-72	15-19	4-5	<2	-
ZICO GROUT 70 S	Crystalline silica	Hydraulic	Tr&V	13-15	2.1	10-30	1300	10-14	76-80	7-8	<1	-
ZICO GROUT 50	Fireclay	Hydraulic	Tr&V	13-14	2.1	30-50	1450	48-52	31-35	7-8	<2.5	-
ZICO GROUT 45	Fireclay	Hydraulic	Tr&V	13-14	2.1	30-50	1400	44-48	38-40	7-8	<2.5	-
ZICOCAST 85RT	Tabular Alumina / Bauxite	Hydraulic	Tr	9-11	2.6	50-80	1700	83-87	5-7	4-5	<2	-
ZICOCAST 80RT	Bauxite / Fireclay	Hydraulic	Tr	9-11	2.6	40-70	1650	78-82	8-12	4-5	<2	-
ZICOCAST 70RT	Bauxite / Fireclay	Hydraulic	Tr	10-12	2.5	40-60	1600	68-72	12-16	4-5	<2	-
ZICOCAST 60RT	Bauxite / Fireclay	Hydraulic	Tr	10-12	2.4	40-60	1550	58-62	25-29	4-5	<2	0.39
ZICOCAST 50RT	Bauxite / Fireclay	Hydraulic	Tr	11-13	2.3	40-60	1500	48-52	35-39	4-5	<2.5	0.39
ZICOCAST 45RT	Bauxite / Fireclay	Hydraulic	Tr	11-13	2.2	40-60	1450	43-47	36-40	4-5	<2.5	0.39
ZICO CAST ESLI	Fireclay	Hydraulic	Tr	12-14	2.2	30-50	1400	44-47	33-36	9-11	2-3	-

V : Vibrating

Tr : Trowelling

# Technical Data

## Castable (Low Cement)

# Technical Data

## Castable (Medium Cement)

Product name	Main raw material	Bonding	Install Method	Water demand (%)	Required material (t/m3)	CCS 110°C (MPa)	Max service T (°C)	Chemical analysis (Average %)						
								Al2O3	SiO2	CaO	Fe2O3	MgO	Cr2O3	SiC
ZICOCAST 97L	Tabular Alumina	Hydraulic	V	5.5-6.5	3	90-120	1800	95-97	1	1.5-2.5	<0.2	-	-	-
ZICOCAST 95L-Cr	Tabular Alumina / Chromium oxide	Hydraulic	V	5.5-6.5	2.9	80-110	1800	93-97	<0.5	2-2.5	<0.5	-	2.5-3	-
ZICOCAST 95L	Tabular Alumina	Hydraulic	V	5.5-6.5	2.9	80-110	1800	94-97	1	2-2.5	0.1	-	-	-
ZICOCAST 93L-Cr	Tabular Alumina / Chromium oxide	Hydraulic	V	5.5-6	2.9	80-110	1800	91-95	1	2-2.5	<0.5	-	2.5-3	-
ZICOCAST 93L-Sp	Tabular Alumina / Spinel	Hydraulic	V	6-7	2.9	80-110	1800	91-93	1	<2	<0.3	3-4	-	-
ZICOCAST 90L-Sp	Tabular Alumina / Spinel	Hydraulic	V	6-7	2.9	80-110	1800	88-92	1	2	<0.3	5-6	-	-
ZICOCAST 90L-AN	Tabular Alumina / Andalusite	Hydraulic	V	6-6.5	2.9	80-110	1750	88-92	5-7	2-2.5	<0.5	-	-	-
ZICOCAST 85L-SiC 15	Tabular Alumina / Silicon Carbide	Hydraulic	V	6-6.5	2.9	80-110	1700	80-85	<1	2-2.5	<0.2	-	-	13-17
ZICOCAST 85L-AN	Tabular Alumina / Andalusite	Hydraulic	V	6-6.5	2.8	80-110	1700	83-87	5-7	2-2.5	<2	<0.5	-	-
ZICOCAST 85L	Bauxite	Hydraulic	V	6-6.5	2.8	80-110	1700	83-87	5-7	2-2.5	<2	<0.5	-	-
ZICOCAST 80L-AN	Tabular Alumina / Andalusite	Hydraulic	V	6-6.5	2.7	80-110	1650	78-82	14-16	2-2.5	<1	-	-	-
ZICOCAST 80L	Bauxite / Fireclay	Hydraulic	V	6-6.5	2.7	80-110	1650	78-82	9-11	2-2.5	<2	<0.5	-	-
ZICOCAST 70L-AN	Tabular Alumina / Andalusite	Hydraulic	V	6-6.5	2.6	80-110	1600	68-72	25-29	2-2.5	<1	-	-	-
ZICOCAST 70L	Bauxite / Fireclay	Hydraulic	V	6-6.5	2.6	80-110	1600	68-72	19-22	2-2.5	<2	<0.5	-	-
ZICOCAST 60L	Bauxite / Fireclay	Hydraulic	V	6-6.5	2.55	80-110	1550	58-62	28-32	2-2.5	<2	<0.5	-	-
ZICOCAST 55L	Bauxite / Fireclay	Hydraulic	V	6-6.5	2.5	80-110	1500	53-57	33-37	2-2.5	<2	<0.5	-	-
ZICOCAST 50L	Bauxite / Fireclay	Hydraulic	V	6-6.5	2.45	80-110	1450	48-52	38-42	2-2.5	<2	<0.5	-	-
ZICOCAST 45L	Bauxite / Fireclay	Hydraulic	V	6-6.5	2.4	70-100	1400	45-48	42-45	2-2.5	<2	<0.5	-	-

V : Vibrating

Product name	Main raw material	Bonding	Install Method	Water demand (%)	Required material (t/m3)	CCS 110°C (MPa)	Max service T (°C)	Chemical analysis (Average %)						
								Al2O3	SiO2	CaO	Fe2O3	SiC		
ZICOCAST 95M	Tabular Alumina	Hydraulic	v	7-9	2.95	80-110	1800	93-97	<0.5	3-4	<0.2	-	-	-
ZICOCAST 90M-AN	Tabular Alumina / Andalusite	Hydraulic	v	7-9	2.9	80-110	1750	88-92	4-5	3-4	<0.5	-	-	-
ZICOCAST 85M-SiC 5	Tabular Alumina / Silicon Carbide	Hydraulic	V	7-9	2.85	80-110	1700	80-85	4.5-5.5	3-4	<2	4-6	-	-
ZICOCAST 85M-AN	Tabular Alumina / Andalusite	Hydraulic	v	7-9	2.85	80-110	1700	83-87	8-11	3-4	<0.5	-	-	-
ZICOCAST 85M	Bauxite / Tabular Alumina	Hydraulic	v	7-9	2.85	80-110	1700	83-87	5-7	3-4	<2	-	-	-
ZICOCAST 80M-AN	Tabular Alumina / Andalusite	Hydraulic	v	7-9	2.8	80-110	1650	78-82	12-15	3-4	<1	-	-	-
ZICOCAST 80M	Bauxite / Fireclay	Hydraulic	V	7-9	2.8	70-100	1650	78-82	8-12	3-4	<2	-	-	-
ZICOCAST 70M-AN	Tabular Alumina / Andalusite	Hydraulic	v	7-9	2.7	70-100	1600	68-72	21-25	3-4	<1	-	-	-
ZICOCAST 70M	Bauxite / Fireclay	Hydraulic	V	7-9	2.6	70-100	1600	68-72	18-22	3-4	<2	-	-	-
ZICOCAST 60M	Bauxite / Fireclay	Hydraulic	V	8-10	2.5	60-90	1550	58-62	24-28	3-4	<2	-	-	-
ZICOCAST 55M	Bauxite / Fireclay	Hydraulic	v	8-10	2.4	60-90	1500	53-57	32-35	3-4	<2	-	-	-
ZICOCAST 50M	Bauxite / Fireclay	Hydraulic	V	8-10	2.3	60-90	1450	48-52	37-40	3-4	<2	-	-	-
ZICOCAST H	Fireclay	Hydraulic	V	7-10	2.3	80-110	1450	45-50	38-41	3.5-4.5	<2	-	-	-
ZICOCAST H1	Fireclay	Hydraulic	V	7-10	2.3	80-110	1450	45-50	39-43	3.5-4.5	<2	-	-	-
ZICOCAST H2	Fireclay	Hydraulic	V	7-10	2.3	80-110	1450	44-48	40-44	3-4	<2	-	-	-
ZICOCAST H3	Fireclay	Hydraulic	V	7-10	2.3	80-110	1450	43-47	41-45	3-4	<2	-	-	-

V : Vibrating

**Office :**  
Unit No.9 | 7<sup>th</sup>Floor | Lidoma Center | Sanat Sq | Shahrak e Gharb | Tehran | Iran.  
**Tel :** (021) 86091225 | **Fax :** (021) 86091225 (9)

**Factory :**  
Shams-Abad Industrial Park | Tehran | Iran .



Scan Me !

[www.zico-ref.ir](http://www.zico-ref.ir)

[Info@zico-ref.ir](mailto:Info@zico-ref.ir)

